



# CLASS wall panels

## Designs without boundaries

Manufactured from the same environmentally friendly material as the highly desirable range of Soundtect 3D panels.

The all new Soundtect CLASS range is also complimented by "CLASS ABOVE" a stunning range of baffles and rafts.

Undoubtedly the most cost effective high quality high performance wall panels, baffles and rafts welcomed by many clients globally.

### KEY FEATURES & BENEFITS

- Mount on walls
- Arrange and combine in various formation
- Suspend from ceilings
- Layer in varying depths to create dramatic spaces
- Using the same tried and tested recycled PET bottles as our existing range.
- Soundtect brackets allows easy installation
- Cost effective solution for large installations
- Installation flexibility for walls and ceilings
- Sustainable design for environmentally conscious projects



# CLASS wall panels

## Colour range



White



Ash



Charcoal

## Product Specifications

### TYPICAL APPLICATIONS

Wall coverings

- Composition: 100% Polyester
- Low VOC
- Colourfastness Properties
  - Colourfastness to Light, AATCC16(3), Class 4.5
- BS EN ISO 354:L2003
- Certified 100% Recyclable
- PET with over 50% Recycled content

### FIRE RATING

- BS1 D0
- Suitable for use in Class1 and Class 0

### SIZE

- 600 x 600 x 50mm
- 600 x 1200 x 50mm

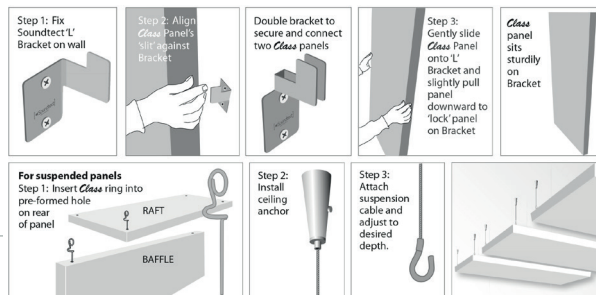
### ACOUSTIC PROPERTIES

- NRC 0.95
- EN ISO 11654:1997

### INSTALLATION

Easy installation for walls

- Simply screw the 'L' mounted wall brackets to your desired surface.
- Align the panel slit against the bracket.
- Gently slide the panel onto the 'L' bracket.
- Pull panel downwards to secure.



### Moisture Absorption

Polyester fibre when exposed to an atmosphere of 50°C at 90% relative humidity for four days showed moisture absorption of less than 0.03% by weight. Polyester is not affected by moisture.

Does not contain any Red List chemicals\*.